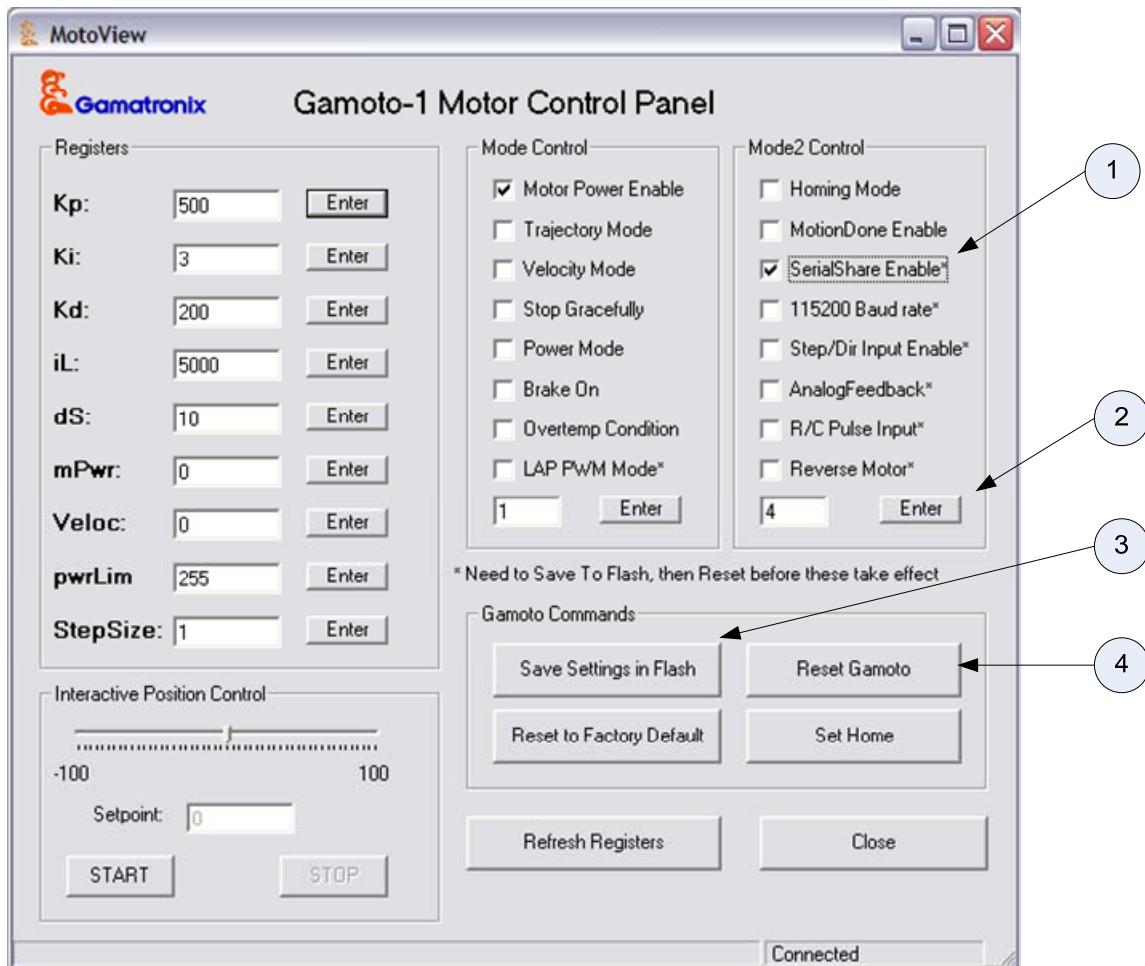


This application note describes how to share the serial port on the Gamoto, to allow connection of up to 8 boards on the same serial cable.

Step 1: Enable SerialShare by using MotoView software

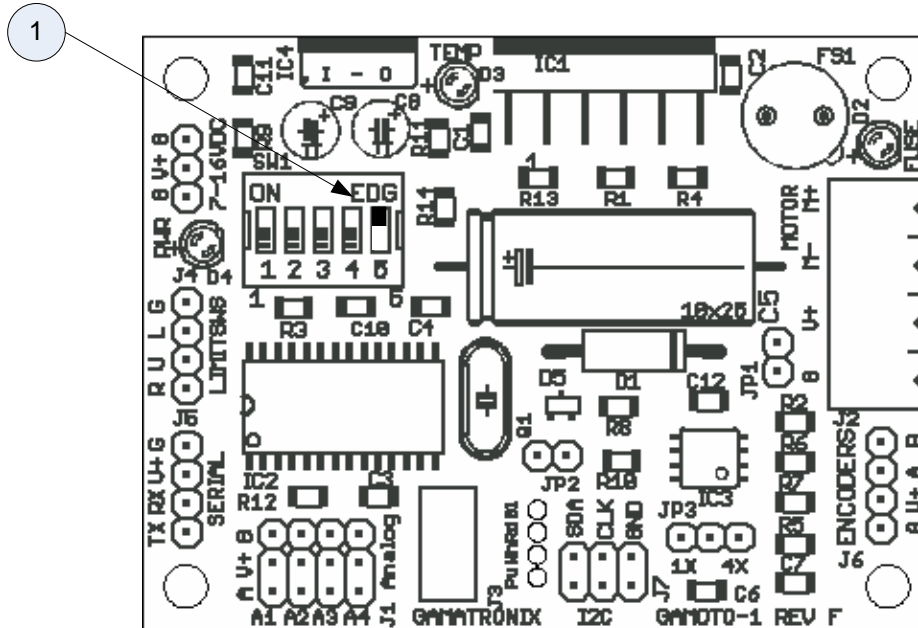


- 1) Check SerialShare Enable box
- 2) Click Enter button
- 3) Click Save Settings to Flash button (this will keep this setting permanently)
- 4) Click Reset Gamoto button

Now the Gamoto is configured to share the serial port, which will keep the TX lines from conflicting when connecting more than one Gamoto to the same serial cable.

Step 2: Set the Address of each Gamoto

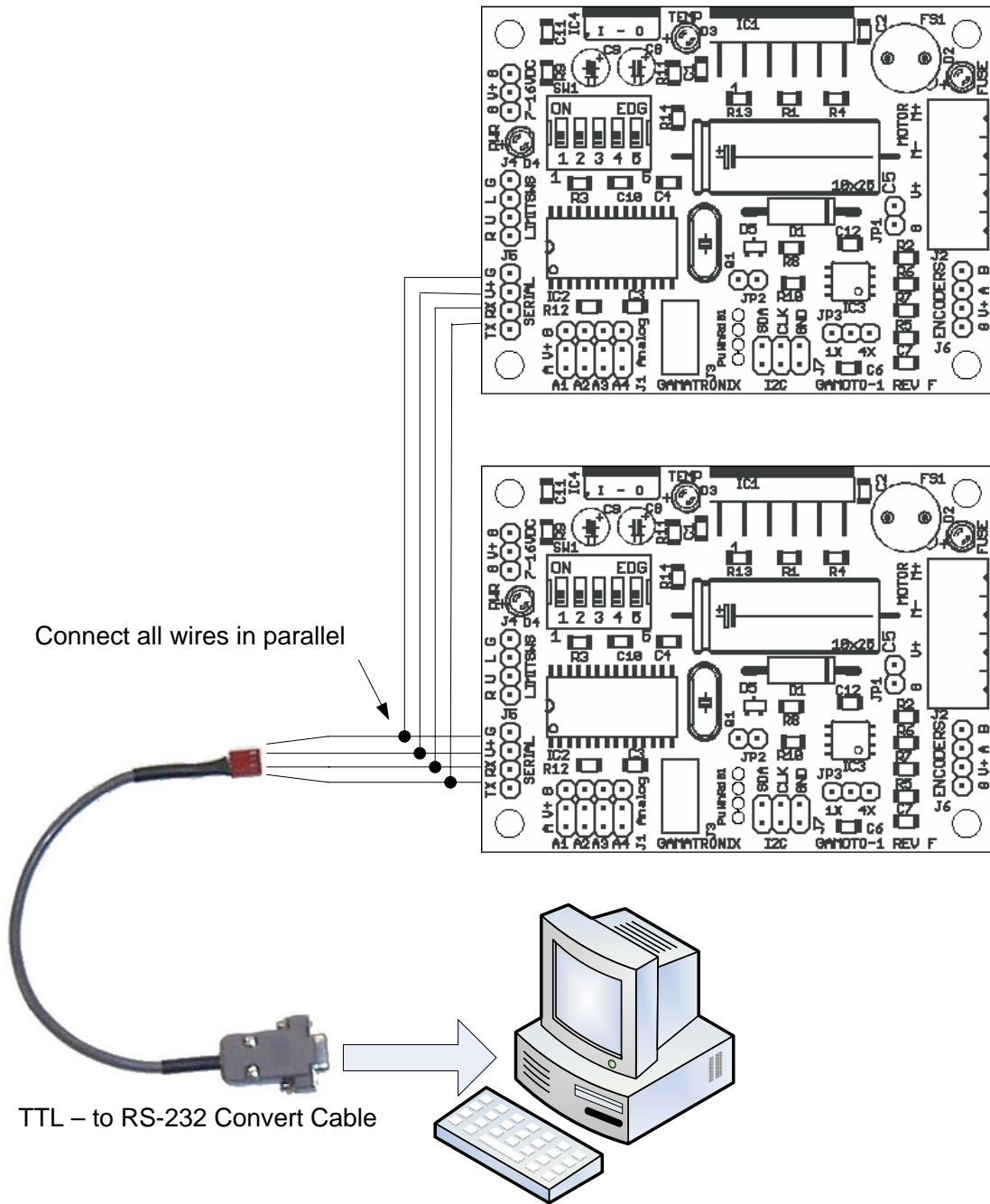
Each Gamoto has an address, set by the dip switches. To put more than one Gamoto on a serial line, each must have a different address. The last three switches (SW 3,4,5) determine the address. For this example of two boards, we will leave one at 000 (all Switches OFF), and set the other Gamoto to address 001 (SW 5 ON).



In this figure, the Gamoto board is set to address 1 (dip-switch 5 = ON).

Step 3: Connect the hardware

To connect more than one Gamoto to the serial port, you simply run all wires in parallel to each of the Gamoto serial ports, as shown in this drawing:

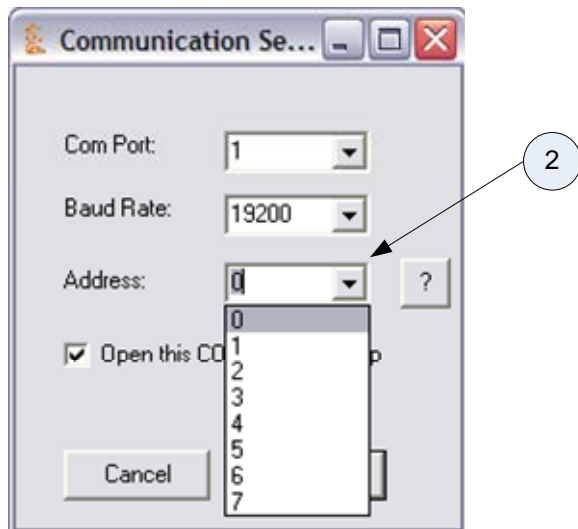


Step 4: Test with MotoView

The last step is to test your system with MotoView. To test communication with Gamoto board #0, simply run MotoView as normal, with the default settings. To test communication with Gamoto #1, you need to set the address to 1 in the Communication settings dialog box, as shown here:



Item 1 shows the Communication menu in MotoView, where you can find the Settings dialog.



Item 2 shows the drop-down box where you select the address for MotoView to communicate with.